

# Public Document Pack



## NOTICE OF MEETING

<b>Meeting</b>	Executive Member for Education Decision Day
<b>Date and Time</b>	Wednesday, 8th November, 2017 at 2.00 pm
<b>Place</b>	Chute Room, Ell Court, The Castle, Winchester
<b>Enquiries to</b>	members.services@hants.gov.uk

John Coughlan CBE  
Chief Executive  
The Castle, Winchester SO23 8UJ

## FILMING AND BROADCAST NOTIFICATION

This meeting may be recorded and broadcast live on the County Council's website. The meeting may also be recorded and broadcast by the press and members of the public – please see the Filming Protocol available on the County Council's website.

## AGENDA

### 1. **AMALGAMATION OF PARK VIEW INFANT SCHOOL AND PARK VIEW JUNIOR SCHOOLS F\_PR**

To consider a report of the Director of Children's Services regarding Park View Infant and Junior Schools

### 2. **KINGS COPSE PRIMARY SCHOOL EXPANSION F\_PR**

To consider a report of the Director of Culture, Communities and Business Services regarding the expansion of Kings Copse Primary School

## ABOUT THIS AGENDA:

On request, this agenda can be provided in alternative versions (such as large print, Braille or audio) and in alternative languages.

## ABOUT THIS MEETING:

The press and public are welcome to attend the public sessions of the meeting. If you have any particular requirements, for example if you require wheelchair access, please contact [members.services@hants.gov.uk](mailto:members.services@hants.gov.uk) for assistance.

County Councillors attending as appointed members of this Committee or by virtue of Standing Order 18.5; or with the concurrence of the Chairman in connection with their duties as members of the Council or as a local County Councillor qualify for travelling expenses.

## HAMPSHIRE COUNTY COUNCIL

### Decision Report

<b>Decision Maker:</b>	Executive Member for Education
<b>Date:</b>	8 November 2017
<b>Title:</b>	Amalgamation of Park View Infant and Park View Junior Schools, Basingstoke
<b>Report From:</b>	Director of Children's Services

**Contact name:** Brian Pope – Assistant Director, Children's Services

**Tel:** 02392 441471

**Email:** brian.pope@hants.gov.uk

#### 1. Executive Summary

- 1.1. On 20 September 2017 the Executive Member for Education decided to publish a statutory Public Notice (Appendix 1) in accordance with sections 15 and 19 of the Education and Inspections Act 2006. The Notice set out the County Council's intention to discontinue Park View Infant School with effect from 1 January 2018, and to establish a community primary school for up to 630 pupils at Park View Junior School utilising the infant school buildings. The report for that decision set out the history and context behind the proposal alongside the findings of the initial consultation with parents, pupils and other interested parties. This further report sets out the context leading to that decision and reports back on any representations received during the statutory Public Notice period.
- 1.2. The report also sets out and comments upon the statutory guidance for decision makers on factors that need to be considered when deciding on proposals to close and expand schools.
- 1.3. No representations to the Public Notice were received.
- 1.4. The report recommends that Park View Infant School be closed with effect from 1 January 2018 and that Park View Junior School be established as a primary school with effect from 1 January 2018.

#### 2. Contextual information

- 2.1. The Office for Standards in Education (Ofsted) published a report in May 2017 which concluded that Park View Infant School should be placed in special measures, as the governing body had not acted with enough drive to bring about improvement of the school and the quality of education being provided was not sufficiently good.
- 2.2. The Department for Education (DfE) has a clear expectation that whenever a school is deemed, by Ofsted, to be inadequate it should be taken over by an academy sponsor and become an academy. Park View Junior School

was inspected in March 2017 and judged to be a good school with good leadership. Park View Infant School and Park View Junior School share a site therefore an alternative in this instance could be to amalgamate the two schools to form a primary school catering for pupils from age 3-11.

- 2.3. Following discussions with the governors of both schools, a letter was received from each school's governing body requesting that the County Council looks at opportunities for both schools to work more closely together and to explore the option of an amalgamation.
- 2.4. The preferred option of the County Council is to amalgamate Park View Infant and Junior Schools by closing the infant school and extending the age range of the junior school to form a primary school. Discussions have taken place with the Regional Schools' Commissioner's Office and this option is acceptable to the DfE.
- 2.5. Both schools have resourced provision for pupils with hearing impairment. Should the proposal be agreed the resourced provision at the infant school would close and the junior school's resourced provision would be expanded to cater for all age groups as part of the new primary offer. The current nursery offer at the infant school would be unaffected.

### **3. Statutory guidance for decision makers regarding school closure and amalgamations**

- 3.1. The Department for Education has issued statutory guidance for decision makers on factors that need to be considered when deciding on proposals to amalgamate schools. There are a number of factors to be considered:
  - Any proposal that is 'related' to another proposal must be considered together, do the published notices comply with statutory requirements?
  - That an appropriate, fair and open local consultation and representation period (to the Public Notice) has been carried out and full consideration has been given to all the responses received.
  - Consideration is given to the quality and diversity of schools in the relevant area and whether the proposal will meet or affect needs of parents, raise local standards and narrow attainment gaps
  - Whether there are any sex, race or disability discrimination issues that arise from the changes being proposed.
  - The impact on community cohesion.
  - That accessibility planning has been properly taken into account and the proposed changes should not adversely impact on disadvantaged groups.
  - The impact on special educational needs provision.
  - There is sufficient capacity to accommodate displaced pupils from a school closure.
  - That guidance on schools causing concern (intervention in failing, underperforming and coasting schools) has been followed.

#### **4. Representations to the Public Notice**

- 4.1. The Public Notice was published on 22 September for a period of four weeks; the closing date for comments was 20 October 2017.
- 4.2. No representations were received during the Public Notice consultation period.

#### **5. Statutory guidance for decision makes regarding school amalgamation**

- 5.1. The relevant factors to be considered in relation to this decision are detailed below;

#### **6. Related proposals**

- 6.1. There was no related proposal relating to the amalgamation of Park View Infant and Park View Junior schools.

#### **7. Consideration of consultation and representation period**

- 7.1. Details on the outcome of the initial public consultation were detailed in the report to the Executive Member for Education of 20 September 2017 and can be accessed at;  
<http://democracy.hants.gov.uk/documents/g687/Public%20reports%20pack%2020th-Sep-2017%2014.00%20Executive%20Member%20for%20Education%20Decision%20Day.pdf?T=10>. This consultation provided a range of opportunities for consultees to submit their responses which were fully considered as part of the above mentioned report. The Public Notice was published and displayed as required in the relevant statutory guidance. No representations were made during the Public Notice period.

#### **8. Education standards and diversity of provision**

- 8.1. Any proposal relating to a school closure should be based upon the fact that the closure will contribute to raising local standards of education and new alternate provision will lead to improved attainment for pupils. Following the Ofsted report in May 2107 for Park View Infant School which placed the school in special measures, options were considered as to how to improve educational outcomes for pupils.
- 8.2. Park View Junior School was inspected in March 2017 and judged to be a good school with good leadership. Park View Infant School and Park View Junior School share a site therefore the preferred option was to amalgamate the two schools to form a primary school catering for pupils from age 3-11.
- 8.3. The County Council believes that the amalgamation of Park View Infant and Junior Schools offers the best potential for creating high quality educational provision with better outcomes for students.

## **9. Equal opportunity issues**

- 9.1. Consideration must be given as to whether there are any sex, race or disability discrimination issues that arise from the changes being proposed. Whilst it is proposed that Park View Infant School is closed, education for infant age pupils would continue in the primary school to be created by extending the age range of Park View Junior School, which is situated on the same site as the infant school.
- 9.2. The policies of the County Council and Park View Junior School in relation to equal opportunities and eliminating discrimination will continue to apply should the amalgamation be approved.
- 9.3. The Council officers will work with the headteacher and governing body of Park View Junior School to assess the opportunities that exist to provide financial support to those families in most need with regard to any additional costs incurred from having to buy a new school uniform. The arrangements will need to be clarified by the governing body should the decision be made to proceed with the amalgamation.

## **10. Community cohesion**

- 10.1. The provision of education will remain in the community albeit under a primary phase rather than separate infant and junior. This proposal offers the best potential for creating high quality educational provision with better outcomes for students in the local community.

## **11. Travel and accessibility**

- 11.1. As no changes are being proposed to the physical location of the schools there will be no impact on travel or accessibility to the schools.

## **12. Changes to special educational needs provision**

- 12.1. Both schools have resourced provision for children with hearing impairment each providing three spaces. The importance of this provision is recognised and, if the schools are amalgamated, provision will continue at the same level by enlarging the provision at the newly formed primary school to 6 places. Pupils placed in the resourced provision would continue to receive the same level of support that is currently available to them, including access to a suitably qualified teacher and other support as required within a mainstream setting to meet their individual needs. Support would continue to be provided to reflect the provision as specified within the pupils' Education, Health and Care Plans, and/or their individual education plans.

## **13. Sufficient capacity exists in the local area to accommodate displaced pupils**

- 13.1. No changes are being proposed in respect of the accommodation available at both schools to provide pupil places. The proposed amalgamation and enlargement of the junior school will utilise the infant school buildings to deliver the number of pupil places required. No changes are proposed to the places being offered at the schools.

**14. That guidance on schools causing concern (intervention in failing, underperforming and coasting schools) has been followed**

- 14.1. Following the Ofsted report that placed Park View Infant School in special measures officers discussed options with the governing body of both the infant and junior schools. Following these discussions a letter was received from each school's governing body requesting that the County Council looks at opportunities for both schools to work more closely together and to explore the option of an amalgamation.
- 14.2. Park View Junior School was inspected in March 2017 and judged to be a good school with good leadership. Park View Infant School and Park View Junior School share a site therefore the preferred option was to propose to amalgamate the two schools to form a primary school catering for pupils from age 3-11.
- 14.3. The Local Authority has followed the relevant guidance regarding intervention and feels the amalgamation of Park View Infant and Junior Schools presents the best opportunity to improve educational outcomes for pupils currently at the infant school.

**15. Consultation equalities**

- 15.1. The County Council has undertaken consultation and the publication of the Public Notice process in line with all relevant Department for Education statutory guidance. Relevant documents were also published in the Hampshire Independent, on the County Councils website and at the school's.
- 15.2. Details of the consultation process and responses were reported to the Executive Member for Education on 20 September 2017 and this report details any representations received during the publication of the Public Notice. No representations have been received.
- 15.3. Equality impacts have been identified in the Equality Statement in Appendix B. Equalities have been considered and no adverse impact has been identified. Education will continue to be provided in the same location and to the same age range as is the case currently. The County Council has commenced engagement with any staff affected by the proposal.
- 15.4. County Council officers will work with the headteacher and governing body of Park View Junior School to assess the opportunities that exist to provide financial support to those families in most need with regard to any additional costs incurred from having to buy a new school uniform. The arrangements will need to be clarified by the governing body should the decision be made to proceed with the amalgamation.

**16. Financial impact**

- 16.1. Park View Infant School ended 31 March 2017 with a surplus balance of £69,933 and Park View Junior School ended 31 March 2017 with a surplus balance of £54,183.
- 16.2. In the event of Park View Infant School closing and amalgamating with Park View Junior School on 1 January 2018, both schools would receive a pro-

rata budget share for the period up to 31 December 2017 for nine months of funding. From 1 January 2018, Park View Junior School would be issued with a revised budget share that incorporates the pupils from Park View Infant School. A financial impact would be the loss of Park View Infant School's lump sum, which is £160,000 per school for 2017/18. However, as a protection for amalgamating schools and to acknowledge the loss of the lump sum, Park View Junior School would continue to receive two lump sums for the remainder of 2017/18 and for 2018/19 only would receive equivalent to 85% of the two combined lump sums.

- 16.3. sums for the remainder of 2017/18 and for 2018/19 only would receive equivalent to 85% of the two combined lump sums.
- 16.4. Both schools have resourced provision for Hearing Impairment (HI) providing six places (three per school) that are commissioned and agreed annually between the schools and the Special Education Needs (SEN) Department Service.
- 16.5. Additional items incurred by the re-organisation would be funded via the re-organisation fund from within the growth fund, as detailed in the Hampshire School Funding Policy Pack.

## **17. Personnel implications**

- 17.1. Should a decision be taken to close Park View Infant School and amalgamate it with Park View Junior School the County Council will work with all affected staff, their professional associations and any future academy sponsor to ensure the interests of all staff are fully considered.
- 17.2. Early provisional engagement with staff at Park View Infant School and Park View Junior School has commenced in parallel to the statutory consultation period. This is required to ensure that should a decision be taken to amalgamate the two schools the required staffing actions can be concluded in line with the proposals.

## **18. Admissions**

- 18.1. The main admissions round for infant/primary and junior school applications for September 2018 opens on 01 November 2017. If the amalgamation is approved Park View Infant and Junior Schools would be removed from the admissions rounds, thereby removing the possibility of applications being made for either school based on the current admission arrangements. They would be replaced with a Park View Primary School, with a Year R intake. Applicants who submit an application, naming either school, would be contacted and advised that they need to amend their application ahead of the admissions application closing date of 15 January 2018.
- 18.2. If the proposal is approved, a request for a variation to the junior school policy will need to be made to the Office of the Schools Adjudicator. This would change it to a primary school policy with a Year R intake of 90.
- 18.3. If the proposal is approved, the existing Year 2 pupils at Park View Infant School would not need to make a Year 3 junior school application as they will progress through to the Key Stage 2 provision in September 2018.



## **19. Future direction**

- 19.1. The Local Authority has met the statutory guidance to enable a decision to be made regarding the amalgamation of Park View Infant School and Park View Junior School.
- 19.2. The Public Notice resulted in no representations being received.
- 19.3. There are significant challenges facing Park View Infant School following the Ofsted judgement placing it in special measures relating to the fact that the quality of education was not sufficiently good. The amalgamation of Park View Infant and Park View Junior Schools present the best opportunity for providing sufficient, quality primary school places enabling one shared vision for pupils in the area with the aim of providing consistent, high aspirations and expectations and a drive for excellence.

## **20. Recommendations**

- 20.1. It is recommended that approval be given to the proposal published by the Local Authority, in accordance with sections 15 and 19 of the Education and Inspections Act and the School Organisation (Prescribed Alterations to Maintained Schools)(England) Regulations 2013 to
  - (a) **Discontinue Park View Community Infant School (including resourced provision), Pinkerton Road, Basingstoke RG22 6RT from 1 January 2018.**
  - (b) **Establish a community primary school by enlarging Park View Junior School, Pinkerton Road, Basingstoke RG22 6RT. This will be through the utilisation of Park View Infant School site and buildings and extension of Park View Junior School's age range to form a primary school for ages 3-11 across the two sites. The primary school would open on 1 January 2018.**

**CORPORATE OR LEGAL INFORMATION:****Links to the Corporate Strategy**

<b>Hampshire safer and more secure for all:</b>	No
<b>Maximising well-being:</b>	yes
<b>Enhancing our quality of place:</b>	No

**Other Significant Links**

<b>Links to previous Member decisions:</b>	
<u>Title</u> Amalgamation of Park View Infant and Park View Junior School, Basingstoke	<u>Date</u> 20/9/17
<b>Direct links to specific legislation or Government Directives</b>	
<u>Title</u> Education and Inspections Act School Organisation-Maintained Schools – Guidance for decision makers	<u>Date</u> <b>8/11/2016</b> <b>April 2016</b>

**Section 100 D - Local Government Act 1972 - background documents**

**The following documents discuss facts or matters on which this report, or an important part of it, is based and have been relied upon to a material extent in the preparation of this report. (NB: the list excludes published works and any documents which disclose exempt or confidential information as defined in the Act.)**

<u>Document</u>	<u>Location</u>
N/A	

## **IMPACT ASSESSMENTS:**

### **1. Equality Duty**

6.1 The County Council has a duty under Section 149 of the Equality Act 2010 ('the Act') to have due regard in the exercise of its functions to the need to:

- Eliminate discrimination, harassment and victimisation and any other conduct prohibited under the Act;
- Advance equality of opportunity between persons who share a relevant protected characteristic (age, disability, gender reassignment, pregnancy and maternity, race, religion or belief, gender and sexual orientation) and those who do not share it;
- Foster good relations between persons who share a relevant protected characteristic and persons who do not share it.

**Due regard in this context involves having due regard in particular to:**

- 6.1.1 The need to remove or minimise disadvantages suffered by persons sharing a relevant characteristic connected to that characteristic;
- 6.1.2 Take steps to meet the needs of persons sharing a relevant protected characteristic different from the needs of persons who do not share it;
- 6.1.3 Encourage persons sharing a relevant protected characteristic to participate in public life or in any other activity which participation by such persons is disproportionately low.

#### **6.2 Equalities Impact Assessment:**

An Equality Impact Assessment (EIA) has been undertaken and no adverse impact has been identified. Education will continue to be provided in the same location and to the same age range as currently. The County Council will work with all affected staff and their professional associations to ensure the interests of all staff are fully considered.

### **7 Impact on Crime and Disorder:**

7.1 The recommendations will have no impact on crime and disorder.

### **8 Climate Change:**

8.1.1 How does what is being proposed impact on our carbon footprint / energy consumption?

No impact has been identified

8.1.2 How does what is being proposed consider the need to adapt to climate change, and be resilient to its longer term impacts?

No specific measures have been identified



## **AMALGAMATION OF PARK VIEW INFANT SCHOOL AND PARK VIEW JUNIOR SCHOOL, BASINGSTOKE**

1. **Notice is given** in accordance with S15 of the Education and Inspections Act 2006 and the School Organisation (Establishment and Discontinuance of Schools) Regulations 2013 that Hampshire County Council, The Castle, Winchester, Hampshire SO23 8UG intends to discontinue Park View Infant Community School (including resourced provision), Pinkerton Road, Basingstoke, RG22 6RT from the 1 January 2018.
2. **Notice is also given** that Hampshire County Council intends to establish a community primary school by enlarging Park View Junior School, Pinkerton Road, Basingstoke, RG22 6RT in accordance with S19 of the Education and Inspections Act 2006. This will be through the utilisation of Park View Infant School site and buildings and extension of Park View Junior School's age range to form a primary school for ages 3-11 across the two sites. It is proposed that the primary school will open on the 1 January 2018. The Nursery provision will be part of the primary school, and admission arrangements will be unaffected.
3. The primary school will provide up to 630 places catering for pupils between the ages of 3 and 11. The school will continue to admit up to 90 pupils at the age of 4+. Pupils will be admitted to the school in accordance with the local authority's admissions policy, published each year before the date on which applications must be submitted; this includes details of the criteria to be applied in the event of over-subscription.
4. Park View Infant School currently provides education for pupils between the ages of 3-7, and has a capacity of 270 places, and the number on roll in June 2017 was 235. The school also provides provision for 3 pupils with hearing impairment.
5. The closure of Park View Infant School is being proposed following the Office for Standards in Education (Ofsted) published report in May 2017. This report concluded that Park View Infant School should be placed in special measures as the quality of education being provided was not sufficiently good. As a result of the Ofsted report options for improving educational outcomes at the Infant school were considered. It was concluded that the Infant School should be amalgamated with Park View Junior School which was inspected in March 2017 and judged to be a good school with good leadership. Park View Infant School and Park View Junior School share a site and it is proposed to amalgamate the two schools to form a primary school catering for pupils from age 3-11 years (including the maintained nursery).
6. Places will be available for all pupils affected by the closure of Park View Infant School (including the resourced provision) at Park View Junior School. The number on roll for both schools at June 2017 census was 505, with a total capacity of 570. Based on current numbers on roll, the total number of pupils from both schools can be accommodated on the existing school sites.

7. Applications for Year R for 2018 to Park View Infant School will be submitted in the normal way. If the decision is made to close Park View Infant School places will be available for pupils at the newly created Primary school.
8. Transport will be provided for any pupils who qualify under the authority's published policy:  
<https://www.hants.gov.uk/educationandlearning/schooltransport>
9. Park View Junior School has a resourced provision for children with hearing impairment which will be expanded to 6 places following the option to close Park View Infant School. The importance of this provision is recognised, and so pupils placed in the resourced provision at Park View Infant school would continue to receive the same level of support that is currently available to them, including access to a suitably qualified teacher and other support as required within a mainstream setting to meet their individual needs. Support would continue to be provided to reflect the provision as specified within the pupils' Education, Health and Care Plans, and/or their individual education plans.
10. Within four weeks from the date of publication of these proposals, any person may object to or make comments on the proposals by sending them to Glenn Parkinson, Strategic Development Office, Children's Services Department, Elizabeth II Court, Winchester, Hampshire SO23 8UG  
(email:[strategicplanningunit@hants.gov.uk](mailto:strategicplanningunit@hants.gov.uk))

**John Coughlan, Chief Executive, Hampshire County Council**

**Publication date: 22 September 2017**

This page is intentionally left blank

## HAMPSHIRE COUNTY COUNCIL

### Decision Report

<b>Decision Maker:</b>	Executive Member for Education
<b>Date:</b>	8 November 2017
<b>Title:</b>	Kings Copse Primary School Expansion
<b>Report From:</b>	Director of Culture, Communities and Business Services

**Contact names:** Steve Clow and Bob Wallbridge

**Tel:** 01962 847858  
01962 847894

**Email:** steve.clow@hants.gov.uk  
bob.wallbridge@hants.gov.uk

#### 1. Executive Summary

- 1.1 This report seeks approval to the project proposals for the permanent expansion of Kings Copse Primary School in Hedge End, at an estimated total cost of £2,024,000.
- 1.2 The purpose of this paper is also to obtain spend and procurement approval for contracting activity associated with the project, including associated external works.

#### 2. Scope of Work

- 2.1 It is proposed to construct a three classroom extension and remodel Kings Copse Primary School to increase the schools capacity from 1 Form of Entry (FE) to 1.5 FE (an increase from 210 to 315 pupils).

#### 3. Contextual Information

- 3.1. The school's net capacity is 210 and there are currently 207 pupils on roll. This project is required to provide 105 additional pupil places at the school arising in response to housing developments in the local area.
- 3.2. Funding for the project was approved at the Executive Lead Member for Children's Services Decision Day on 18 January 2017 and this report outlines the available budget from within which the project must be designed and delivered.

#### 4. Finance

- 4.1. Capital Expenditure:

The Capital Expenditure has already been approved; the following tables outline the breakdown of its distribution across the project:

<b>Capital Expenditure</b>	<b>Current Estimate</b>	<b>Capital Programme</b>
	<b>£'000</b>	<b>£'000</b>
Buildings	1,737	1,737
Fees	287	287
	2,024*	2,024

\* The means by which the difference between the Current Estimate and the Capital Programme allocation is to be met are shown in the table below:

#### 4.2. Sources of Funding:

<b>Financial Provision for Total Scheme</b>	<b>Buildings</b>	<b>Fees</b>	<b>Total Cost</b>
	<b>£'000</b>	<b>£'000</b>	<b>£'000</b>
1. From Own Resources			
a) Capital Programme (as above)	364	60	424
2. From Other Resources			
a) Developer's Contribution	1,373	227	1,600
<b>Total (excluding Contingency)</b>	<b>1,737</b>	<b>287</b>	<b>2,024</b>

##### a) *Building Cost:*

Net Cost = £2,604 per m<sup>2</sup>  
Gross Cost = £4,058 per m<sup>2</sup>  
Cost Per Pupil Place = £18,475

##### b) *Furniture & Equipment:*

Included in the above figures is an allocation of approximately £74,000 for the provision of all loose furniture, fittings, equipment and I.T. (inclusive of fees).

##### c) *School Balances:*

The school has the following level of balances:

*Published revenue balance as at 31 March 2017: £172,168.02*

*Devolved capital as at 31 March 2017: £25,165.91*

#### 4.3. Revenue Issues:

##### a) *Overview of Revenue Implications:*



	(a) Employees £'000	(b) Other £'000	(a+b) *Net Current Expenditure £'000	(c) Capital Charges £'000	(a + b + c) Total Net Expenditure £'000
Revenue Implications Additional + / Reductions	0	0	0	111	111

*b) Energy Costs:*

The estimated annual energy consumption for the new accommodation will meet that required by current Building Regulations.

*c) Energy Consumption:*

The estimated annual energy consumption for the new accommodation will meet that required by current Building Regulations.

## 5. Details of site and existing Infrastructure

- 5.1. Kings Copse Primary School is located off Kings Copse Road, Hedge End.
- 5.2. The school site is located in Hedge End. Playing fields are located to the west of the school building which is bordered to the north and north-east by areas of existing trees.
- 5.3. Kings Copse Primary School was built in 2008 to replace the original SCOLA system built primary school. The existing building is single storey with pitched roofs.
- 5.4. The school also contains a specialist Visual Impairment resources provision (VI unit) with a capacity for 10 pupils.
- 5.5. The existing mains services and drainage infrastructure at the site is considered to be sufficient to accommodate the proposed extension to the school.

## 6. Scope of the Project

- 6.1. The expansion of Kings Copse Primary School will include:
  - A new single-storey three classroom extension, incorporating pupils WC's, an accessible adult WC and storage
  - Internal refurbishment and remodelling works to relocate the Visual Impairment unit and create a new reception classroom
  - Associated hard, soft landscaping including staff car park

- 6.2. It is proposed that the works be procured through a traditional tender process.
- 6.3. It is anticipated that works will commence on site during Summer 2018 and complete during Spring 2019.
- 6.4. It is proposed that the contractor will access the school site by the main school entrance off Kings Copse Road. The contractor's compound will be located on the existing staff car park. The contractor's access road will include two controlled pupil crossing points, managed by the contractor and will provide safe access from the school onto the playing field.
- 6.5. No deliveries or movements of vehicles will take place at the start or end of the school day, in order to avoid traffic conflict when pupils are arriving at or departing from the school.
- 6.6. The school will remain in operation during the construction period and local management arrangements will be put in place to manage the health and safety impact to all users.

## **7. The Proposed Building**

- 7.1. The proposed extension to the school has been designed to complement the scale and form of the existing building and will be constructed of red brick with a high performance roof. Windows and doors will be powder aluminium.
- 7.2. It is proposed alterations be made to the existing ICT Suite to relocate the VI unit, and to create a new reception classroom.
- 7.3. The new reception classroom will be located adjacent to the existing Year R classroom and will be linked with a new wet area serving both classrooms. This location will also allow easy access to the dedicated early years outside play space.
- 7.4. The VI unit will be relocated adjacent to the existing sensory garden courtyard and will increase utilisation of this space.

## **8. External Works**

- 8.1. The external landscape proposals at Kings Copse Primary School will include:
  - 6 additional staff car parking spaces
  - 1 additional accessible parking bay
  - Relocation and increase of external play area with an artificial surface
  - Artificial surface pathway connecting new extension with upper level play area
  - Relocated cycle storage
  - Additional scooter storage
  - Landscaping
  - Replacement tree planting
- 8.2. The project will provide additional car parking on the school site which will be in line with the Hampshire County Council On-Site School Parking.

## **9. Planning**

9.1. A planning application was submitted in July 2017.

## **10. Building Management**

10.1. The existing building management arrangements will remain in place.

## **11. Professional Resources**

Architectural	- Culture, Communities & Business Services
Landscape	- Culture, Communities & Business Services
Mechanical & Electrical	- Culture, Communities & Business Services
Structural Engineering	- Culture, Communities & Business Services
Quantity Surveying	- Culture, Communities & Business Services
Principal Designer	- Culture, Communities & Business Services
Drainage	- Economy, Transport and Environment
Ecology Team	- Economy, Transport and Environment

## **12. Consultations**

12.1. The following have been consulted during the development of this project and feedback can be seen in overview in Appendix C:

Headteacher  
School Governors  
Children's Services  
Executive Lead Member for Children's Services  
Local County Councillor  
Local Residents – via Public Consultation 12/06/17  
Fire Officer  
Access Officer  
ETE Planning Department  
Sport England

## **13. Risk & Impact Issues**

13.1. Please see Appendix B for a summary of the risk and impact issues considered in relation to the design of this project.

## **14. Recommendations**

14.1. That the Executive Member for Education gives approval to the project proposals for the Expansion at Kings Copse School, at an estimated total cost of £2,024,000

14.2. That the Executive Member for Education grants procurement and spend approval for contracting activity associated with the project as outlined in Section 6.2 of this report.

**CORPORATE OR LEGAL INFORMATION:****Links to the Strategic Plan**

<b>Hampshire maintains strong and sustainable economic growth and prosperity:</b>	Yes
<b>People in Hampshire live safe, healthy and independent lives:</b>	Yes
<b>People in Hampshire enjoy a rich and diverse environment:</b>	Yes
<b>People in Hampshire enjoy being part of strong, inclusive communities:</b>	Yes

**Other Significant Links**

<b>Links to previous Member decisions:</b>		
<u>Title</u>	<u>Reference</u>	<u>Date</u>
<a href="#">Children's Service Capital Programme Report</a>		18.01.2017
<b>Direct links to specific legislation or Government Directives</b>		
<u>Title</u>		<u>Date</u>

**Section 100 D - Local Government Act 1972 - background documents**

The following documents discuss facts or matters on which this report, or an important part of it, is based and have been relied upon to a material extent in the preparation of this report. (NB: the list excludes published works and any documents which disclose exempt or confidential information as defined in the Act.)

<u>Document</u>	<u>Location</u>
None	

## **RISK & COMBINED IMPACT ASSESSMENT:**

### **1. Equality Duty**

1.1 The County Council has a duty under Section 149 of the Equality Act 2010 ('the Act') to have due regard in the exercise of its functions to the need to:

- Eliminate discrimination, harassment and victimisation and any other conduct prohibited under the Act;
- Advance equality of opportunity between persons who share a relevant protected characteristic (age, disability, gender reassignment, pregnancy and maternity, race, religion or belief, gender and sexual orientation) and those who do not share it;
- Foster good relations between persons who share a relevant protected characteristic and persons who do not share it.

**Due regard in this context involves having due regard in particular to:**

- a) The need to remove or minimise disadvantages suffered by persons sharing a relevant characteristic connected to that characteristic;
- b) Take steps to meet the needs of persons sharing a relevant protected characteristic different from the needs of persons who do not share it;
- c) Encourage persons sharing a relevant protected characteristic to participate in public life or in any other activity which participation by such persons is disproportionately low.

### **1.2 Equality Impact Assessment:**

- a) The positive impact is to increase the size of the school to enable more Primary School places. The building has been designed to be fully accessible.
- b) The building has been designed to improve accessibility including additional accessible WC and improved accessible parking.

### **2 Crime Prevention Issues:**

2.1 The County Council has a legal obligation under Section 17 of the Crime and Disorder Act 1998 to consider the impact of all the decisions it makes on the prevention of crime and disorder in the County. The proposals in this report have no impact on the prevention of crime.

### **3 Fire Risk Assessment**

- 3.1 With respect to fire safety and property protection, the proposals have been risk assessed in line with the agreed Property Services procedures, and confirmed that the provision of sprinklers is not required in this instance.
- 3.2 The proposals will meet the requirements of the Building Regulations (BB100 Fire Safety in Schools), including enhancements beyond minimum provision, and are consistent with current fire safety legislation, the partnership arrangement with Hampshire Fire and Rescue Services, and are in line with the County Council's policy to manage corporate risk.
- 3.3 The project proposals include the following fire safety and enhanced features:
- Additional automatic fire detection, with full (24/7) remote monitoring.
  - External finishes specified as fire resistant.
  - Reduced fire compartment sizes.
  - Consideration of secure by design principles including specific site security, bin storage away from building, external lighting etc.

### **4 Health and Safety**

- 4.1 Design risk assessments, pre-construction health & safety information and a Health & Safety File will be produced and initiated in accordance with the Construction Design and Management Regulations for the proposed scheme.

### **5 Climate Change:**

- 5.1 The project will incorporate the following sustainability features:

A highly insulated building envelope for the extension including high performance windows, doors and roof lights to reduce energy consumption.

A site waste management plan will be developed to ensure that during construction the principles of minimising waste are maintained.

Energy efficient lighting and heating controls, each light fitting will be day-light linked with absence detection to ensure the minimum energy is used.

External lighting to provide safe access and emergency escape routes that will be carefully designed to prevent light pollution to avoid nuisance to residential properties.

Low water-consumption sanitary installations.

Natural ventilation with heat recovery to main spaces with night-time cooling strategy.

Provision of good levels of day lighting to all teaching areas to reduce the need for artificial lighting and energy use.

Classrooms have been designed to ensure large glazing areas face north to remove the impact of solar gain.

**FEEDBACK FROM CONSULTEES:****OTHER EXECUTIVE MEMBERS:**

<b>Executive Member &amp; Portfolio</b>	<b>Reason for Consultation</b>	<b>Date Consulted</b>	<b>Response:</b>
Councillor Keith Mans, Executive Lead Member for Children's Services	Portfolio Holder		

**OTHER FORMAL CONSULTEES:**

<b>Member/ Councillor</b>	<b>Reason for Consultation</b>	<b>Date Consulted</b>	<b>Response:</b>
Councillor Tonia Craig	Local Member for Hedge End & West End South		

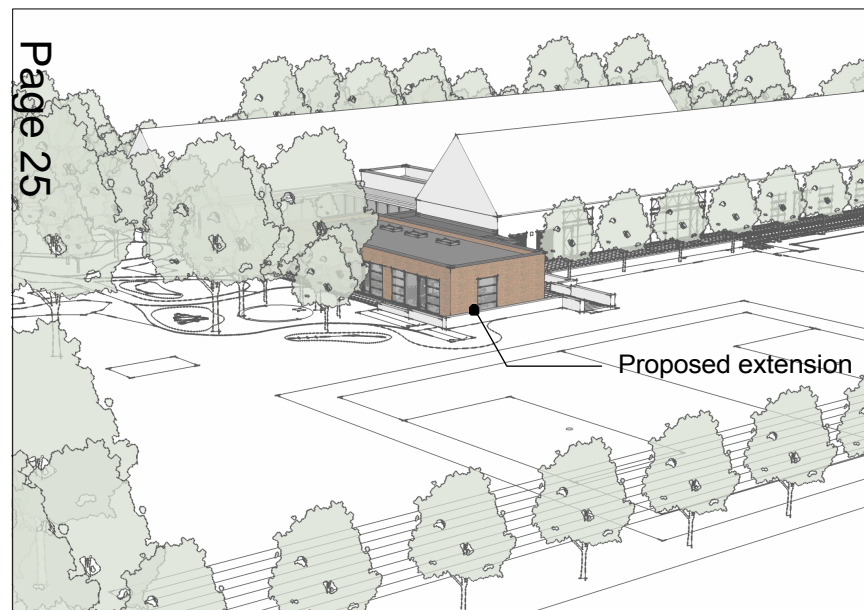
This page is intentionally left blank



**Kings Cope Primary School**  
Hedge End  
Expansion to 1.5FE  
Proposed Site & Building Plans



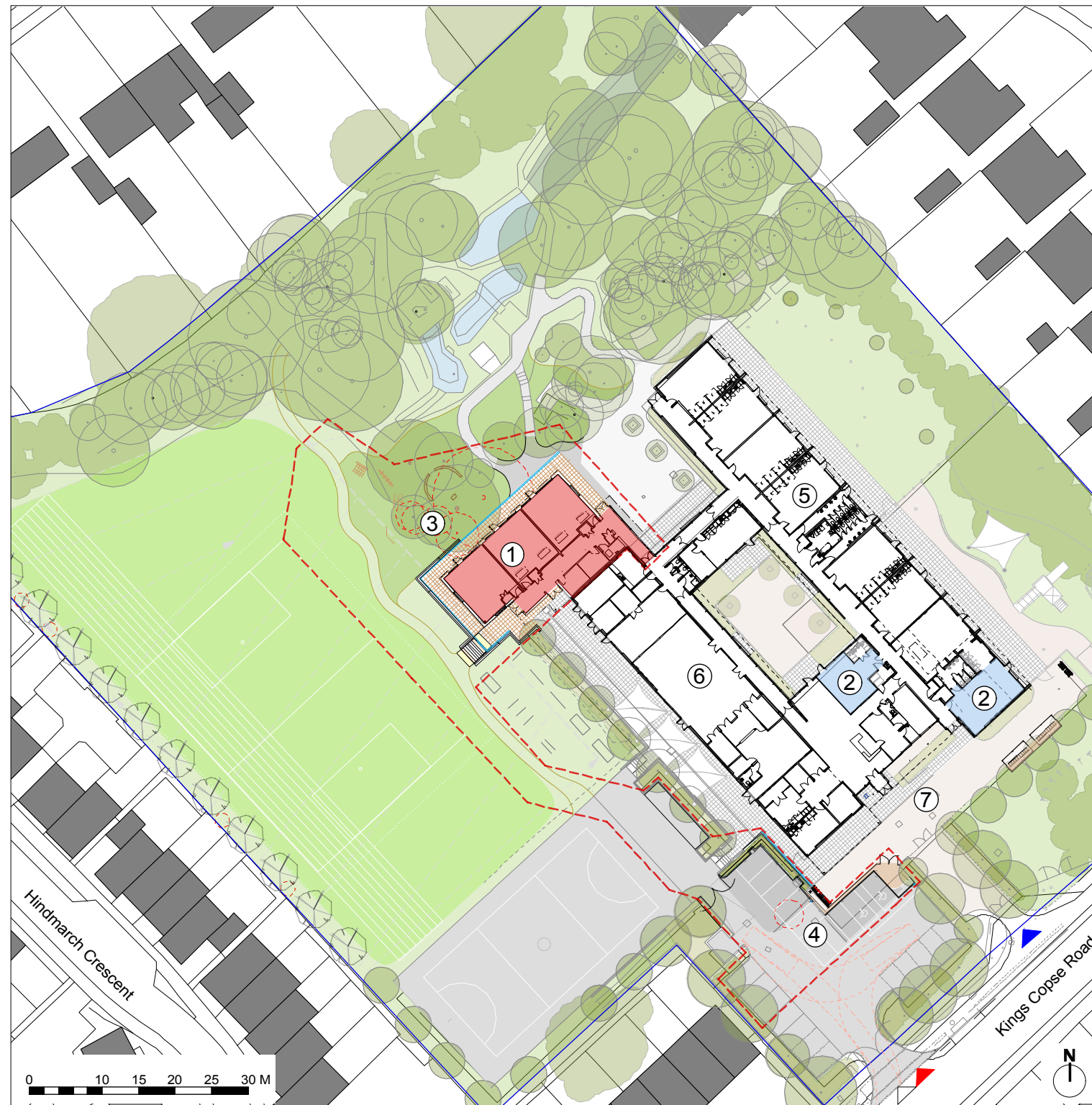
Existing Site Location Plan  
 (A) - Existing School (B) - Proposed Extension



Proposed Aerial View Looking South-East



Proposed South East Elevation



Proposed Site Plan

Proposed Site Plan:

- 1 Proposed 3 classroom extension
- 2 Proposed internal refurbishment
- 3 Proposed landscape alterations
- 4 Proposed staff carpark enlargement
- 5 Existing classrooms
- 6 Existing hall
- 7 Existing school entrance

- HCC Ownership Boundary
- Proposed building works
- Refurbished / repurposed spaces
- Construction Site Boundary
- School Site Boundary
- Pedestrian Access
- Vehicular Access
- Contractor Access

© Crown Copyright and database rights 2017. All rights reserved. HCC 100019180.

**Project Appraisal**

Not to Scale

P11235-HCC-00-DR-A-1401

September 2017



Proposed South East Elevation

This page is intentionally left blank